



2018

was a year of tremendous opportunity for Jeremiah Program

as we celebrated our 20th Anniversary and laid the foundation to dramatically increase our impact over the next five years. We are deeply grateful for friends like you. Your support of our proven two-generation (2Gen) approach is vital to ending the cycle of poverty for an even greater number of single mothers and their children across the country.

We are pleased to share some national highlights from this past year. Thanks to your support, we:

- » **Completed a new five-year strategic plan** with the goal to impact 4X more mothers and children by 2023.
- » **Hosted a 20/20 Vision Summit in Minneapolis**, convening more than 300 people to share challenges and best practices for transforming families two generations at a time.
- » **Formed a Diversity, Equity, and Inclusion Advisory Council** of diverse Jeremiah staff, board members, and graduates to ensure voices from across the organization are valued and reflective of our communities.
- » **Developed a new organization-wide evaluation framework** to track more outcomes for Jeremiah families, guide program design, and pave the way for a robust external impact evaluation.
- » **Celebrated the grand opening of our new Fargo-Moorhead campus**, which houses 20 furnished apartments and a licensed child development center to support families while mother and child attend school.
- » **Raised 90% of our capital campaign goal** to break ground on a new campus in Rochester-Southeast MN and began serving our first families through our signature empowerment training.



Five program pillars

- » Career-track college education
- » Quality early childhood education
- » Safe, affordable housing
- » Empowerment & life skills training
- » Supportive community

Our Mission

End the cycle of poverty for single mothers and their children two generations at a time.





Jeremiah Program

BOSTON

Innovative model using partnership for childhood education and housing with a target to serve 150 families by 2022.



"Jeremiah Program is the foundation for my family's overall wellness. Because of the support we receive, we are able to succeed."

– Kaisha, Jeremiah mom

With your generous support, we:



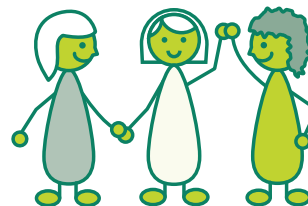
Partnered with 50 women and children in Boston, pre-admissions through graduation.

Celebrated five moms earning their associate's degree, all of whom continued on to pursue a bachelor's degree.



Celebrated 47% of moms achieving a GPA of 3.0 or higher.

Enrolled 96% of children in an accredited education program.



Received 900 hours of hands-on support from our committed volunteers.

Our innovative program continued to grow in 2018 as we focused on building community among 22 Jeremiah families and preparing for future growth. Program Evaluation & Research Group (PERG) completed an evaluation of our new approach to service delivery in Boston, concluding that it is cost-effective and scalable for a large population.

Using PERG's findings as a blue print for growth, we completed a new strategic plan, with a goal to serve 150 families annually by 2022. We are incredibly grateful to Wellington Management Foundation for their initial investment in our expansion through a \$200,000 Catalyst grant.

BOSTON
130 Warren Street
Roxbury, MA 02119
617-245-6549