



# Jeremiah Program

## A Place for Transformation

### 2018

was a year of tremendous opportunity for Jeremiah Program

as we celebrated our 20th Anniversary and laid the foundation to dramatically increase our impact over the next five years. We are deeply grateful for friends like you. Your support of our proven two-generation (2Gen) approach is vital to ending the cycle of poverty for an even greater number of single mothers and their children across the country.

**We are pleased to share some national highlights from this past year. Thanks to your support, we:**

- » **Completed a new five-year strategic plan** with the goal to impact 4X more mothers and children by 2023.
- » **Hosted a 20/20 Vision Summit in Minneapolis**, convening more than 300 people to share challenges and best practices for transforming families two generations at a time.
- » **Formed a Diversity, Equity, and Inclusion Advisory Council** of diverse Jeremiah staff, board members, and graduates to ensure voices from across the organization are valued and reflective of our communities.
- » **Developed a new organization-wide evaluation framework** to track more outcomes for Jeremiah families, guide program design, and pave the way for a robust external impact evaluation.
- » **Celebrated the grand opening of our new Fargo-Moorhead campus**, which houses 20 furnished apartments and a licensed child development center to support families while mother and child attend school.
- » **Raised 90% of our capital campaign goal** to break ground on a new campus in Rochester-Southeast MN and began serving our first families through our signature empowerment training.

#### NATIONAL OFFICE

615 1st Avenue NE, Suite 210  
Minneapolis, MN 55413  
612-259-3000

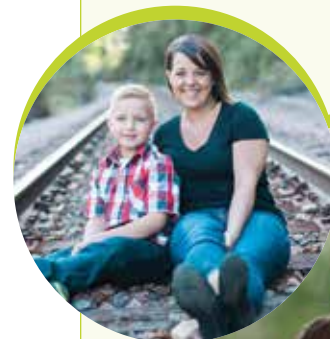


#### Five program pillars

- » Career-track college education
- » Quality early childhood education
- » Safe, affordable housing
- » Empowerment & life skills training
- » Supportive community

#### Our Mission

*End the cycle of poverty for single mothers and their children two generations at a time.*





# Jeremiah Program

A Place for Transformation



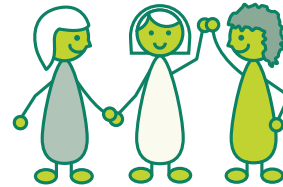
**Partnered with 638 women** and children in six cities across the United States in a variety of program services.



Moms remained on track to reach their goals by cumulatively participating in **3,075 coaching sessions**.



**82% of children** enrolled in our child development centers demonstrated age-appropriate development.



The larger community showed their support for Jeremiah by contributing more than **24,000 volunteer hours**.



**90 new moms** set their families on a path to success by completing empowerment training.



**55% of moms** achieved a GPA of 3.0 or higher.



# Jeremiah Program

MINNEAPOLIS  
SAINT PAUL

Jeremiah's first residential campuses with a total of 77 furnished apartments, on-site child development centers and more.



*"I am in awe and proud of the life I have created for my son and me. I am filled with joy to be living the life I now get to live. I have broken the cycle in so many ways, and my son is a living example of that. He is growing up feeling loved, valued, safe and empowered. Jeremiah helped me see that and I taught him that myself."*

– Brittany, Jeremiah graduate

## With your generous support, we:

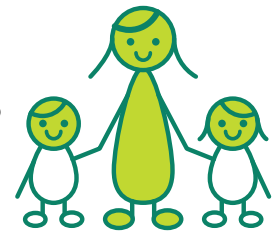


Provided safe, affordable housing to 100 families.

In 2018, we partnered with 382 women and children in the Twin Cities. In our early childhood education centers, 82% of our children were at or above age-appropriate development benchmarks. Surveyed graduate moms left Jeremiah Program earning an average of \$22.25/hour (\$46,280/year).

We welcomed our new Executive Director, La Juana Whitmore, in July, who brings a wealth of both business and nonprofit experience. Thanks to a group of volunteer consultants from Optum, we redesigned our life skills programming with direct input from Jeremiah moms, including a new curriculum covering topics mothers find most relevant to their day-to-day lives.

Welcomed 39 new families to our Twin Cities campuses.



Celebrated nine moms graduating with postsecondary degrees.

Celebrated 19 preschoolers graduating from our child development centers, prepared for kindergarten and beyond.



Recognized 55% of moms who achieved a GPA of 3.0 or higher.

Continued partnering with Greater Minneapolis Crisis Nursery to provide on-site mental health services to moms and train staff in a trauma-informed model of care.



**MINNEAPOLIS**  
1510 Laurel Ave  
Minneapolis, MN 55403  
612-692-8711

**SAINT PAUL**  
932 Concordia Ave  
St. Paul, MN 55104  
651-332-5002



# Jeremiah Program

FARGO  
MOORHEAD

Residential campus with 20 furnished apartments, on-site child development center and more.



*"I have grown so much as a person already and I am so happy to be in a program that has put my son and me on a better path. I feel like I finally have a fresh start and a place to call home."*

*– Kristie, Jeremiah Program mom*

## With your generous support, we:



Partnered with 44 women and children in Fargo-Moorhead, pre-admissions through graduation.

Provided safe, affordable housing for 18 families.



2018 was a landmark year as we celebrated the grand opening of our new residential campus and began moving families into safe, affordable housing. We reached 90% occupancy by the end of the year and established an endowment through the generous support of prominent local donors.

The Fargo-Moorhead community has welcomed Jeremiah with open arms – more than 500 volunteers contributed 2,500 hours in 2018. In their recent plan to end homelessness, the North Dakota Interagency Council on Homelessness cited Jeremiah Program Fargo-Moorhead as an example of the kind of successful strategies needed to end generational poverty.

**FARGO - MOORHEAD**  
3104 Fiechtner Drive S  
Fargo, ND 58103  
701-793-5616



Celebrated 64% of moms achieving a GPA of 3.0 or higher.

Provided quality early learning for 18 children from these residential families through our new on-site child development center.



Raised \$89,000 during Giving Hearts Day, doubling the amount raised in 2017.



# Jeremiah Program

AUSTIN

Residential campus with 35 furnished apartments, on-site child development center and more.



*"My son and I have built a great foundation at Jeremiah Program, and he will know that anything is possible after seeing what I've been through."*

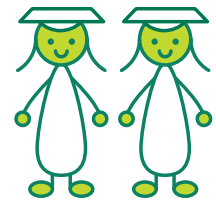
*– Deja, Jeremiah mom*

## With your generous support, we:



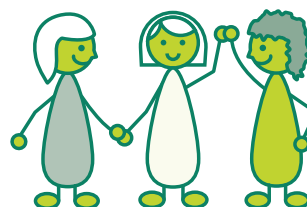
Provided safe, affordable housing to 28 families living in residence.

Celebrated two moms graduating from their postsecondary program.



Guided 19 women through empowerment training.

Celebrated 86% of children in our Child Development Center demonstrating age-appropriate development.



Received 4,861 hours of hands-on support from our committed volunteers.

In 2018, we partnered with 105 women and children in Austin, pre-admissions through graduation. Most moms attended Austin Community College (ACC), located within easy walking distance of families' homes. ACC has been a committed partner since we began serving families in 2013, working closely with Jeremiah staff to ensure moms are supported in their degree programs. Several moms are also attending Texas State University and the University of Texas.

We partnered with United Way of Greater Austin in 2018 with the goal of integrating the 2Gen approach throughout our entire community. The City of Austin/Travis County is the first metropolitan area in the country to develop a 2Gen Strategic Plan that uses social services as a mechanism for promoting economic mobility for both generations of a family.

### AUSTIN

1200 Paul Teresa Saldaña Street  
Austin, TX 78702  
512-770-9036



# Jeremiah Program

BOSTON

Innovative model using partnerships for early childhood education and housing with a target to serve 150 families by 2022.



*"Jeremiah Program is the foundation for my family's overall wellness. Because of the support we receive, we are able to succeed."*

*– Kaisha, Jeremiah mom*

## With your generous support, we:



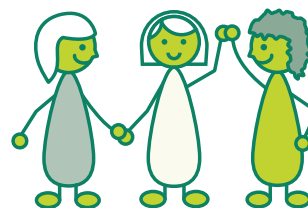
Partnered with 50 women and children in Boston, pre-admissions through graduation.

Celebrated five moms earning their associate's degree, all of whom continued on to pursue a bachelor's degree.



Celebrated 47% of moms achieving a GPA of 3.0 or higher.

Enrolled 96% of children in an accredited education program.



Received 900 hours of hands-on support from our committed volunteers.

Our innovative program continued to grow in 2018 as we focused on building community among 22 Jeremiah families and preparing for future growth. Program Evaluation & Research Group (PERG) completed an evaluation of our new approach to service delivery in Boston, concluding that it is cost-effective and scalable for a large population.

Using PERG's findings as a blue print for growth, we completed a new strategic plan, with a goal to serve 150 families annually by 2022. We are incredibly grateful to Wellington Management Foundation for their initial investment in our expansion through a \$200,000 Catalyst grant.

**BOSTON**  
130 Warren Street  
Roxbury, MA 02119  
617-245-6549



# Jeremiah Program

NEW YORK

Newest progressive model combining residential and partner models for early childhood education and housing.



*"My favorite part of the program is the empowerment courses. It taught me that I can change; if I don't like my circumstances, I can change it. I also liked the fact that it was like group therapy where we can share in a judgment-free space."*

*– Dominique, Jeremiah mom*

## With your generous support, we:



Helped all eight moms from our first empowerment group enroll in Medgar Evers College.

Ensured all children accessed high-quality early learning through an ongoing partnership with SCO Family of Services.



Started a second round of empowerment training for a new group of 10 moms.

Facilitated community service opportunities for families.



Established a Community Board of Trustees.

In 2018, we grew our presence in the Brownsville neighborhood of Brooklyn, partnering with 39 women and children in the community and building strong relationships with local organizations serving single-mother families.

Wilder Research recently completed an external evaluation of our New York program, projecting up to an 11:1 Return on Investment for Jeremiah mothers and children in Brownsville. Given this potential for radical impact, we completed a new strategic plan that focuses on dramatically increasing the number of families we serve and continuing to build innovative community partnerships.

### NEW YORK

Gregory Jackson Center for Brownsville  
519 Rockaway Ave. 4th Floor  
Brooklyn, NY 11212  
646-797-4374



# Jeremiah Program

ROCHESTER  
SOUTHEAST MN

On track for 2019 groundbreaking, Jeremiah's newest campus with 40 furnished apartments, on-site child development center and more.



*"If it weren't for Jeremiah, I would be jobless and homeless. The drive to change my life and my daughter's life is so strong now. I now think every day, 'I can, I am, and I will!'"*

– Kayla, Jeremiah Program mom

## With your generous support, we:



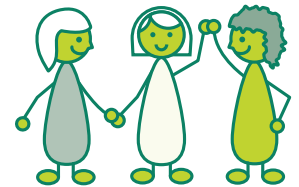
Began serving families, with eight women participating in our first round of empowerment training.

Offered families holistic support through 165 individual coaching sessions.



Celebrated 100% participation and high ratings on our first participant survey.

Received 1,680 hours of hands-on support from our committed volunteers.



2018 was a tremendous year of growth for our Rochester-Southeast MN program. Unprecedented city, county, state, corporate, private and faith-based philanthropic support has raised all but \$1.25M of our total \$16.2 Capital Campaign goal and launched programming to our first group of families.

Together we are doing something wonderful that acting alone we could not. We are on track to break ground in 2019 on a 65,000 square foot campus with 40-units of safe, affordable housing and more. Our on-site child development center will offer Head Start and Early Head Start for 64 young children through a partnership with Families First of Minnesota.

**ROCHESTER-SOUTHEAST MN**  
126 Woodlake Drive SE  
Rochester, MN 55904  
507-215-8661



Thank you for all you have done to make 2018 a great success. Our families are stronger because of you!

**JEREMIAHPROGRAM.ORG**