



# Jeremiah Program

ROCHESTER  
SOUTHEAST MN

A Place for Transformation

## 2018

was a year of tremendous opportunity for Jeremiah Program

as we celebrated our 20th Anniversary and laid the foundation to dramatically increase our impact over the next five years. We are deeply grateful for friends like you. Your support of our proven two-generation (2Gen) approach is vital to ending the cycle of poverty for an even greater number of single mothers and their children across the country.



**We are pleased to share some national highlights from this past year. Thanks to your support, we:**

- » **Completed a new five-year strategic plan** with the goal to impact 4X more mothers and children by 2023.
- » **Hosted a 20/20 Vision Summit in Minneapolis**, convening more than 300 people to share challenges and best practices for transforming families two generations at a time.
- » **Formed a Diversity, Equity, and Inclusion Advisory Council** of diverse Jeremiah staff, board members, and graduates to ensure voices from across the organization are valued and reflective of our communities.
- » **Developed a new organization-wide evaluation framework** to track more outcomes for Jeremiah families, guide program design, and pave the way for a robust external impact evaluation.
- » **Celebrated the grand opening of our new Fargo-Moorhead campus**, which houses 20 furnished apartments and a licensed child development center to support families while mother and child attend school.
- » **Raised 90% of our capital campaign goal** to break ground on a new campus in Rochester-Southeast MN and began serving our first families through our signature empowerment training.

### Five program pillars

- » Career-track college education
- » Quality early childhood education
- » Safe, affordable housing
- » Empowerment & life skills training
- » Supportive community

### Our Mission

*End the cycle of poverty for single mothers and their children two generations at a time.*





# Jeremiah Program

ROCHESTER  
SOUTHEAST MN

On track for 2019 groundbreaking, Jeremiah's newest campus with 40 furnished apartments, on-site child development center and more.



*"If it weren't for Jeremiah, I would be jobless and homeless. The drive to change my life and my daughter's life is so strong now. I now think every day, 'I can, I am, and I will!'"*

– Kayla, Jeremiah Program mom

## With your generous support, we:



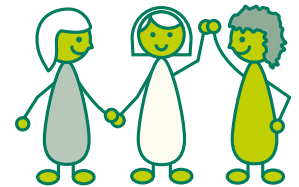
Began serving families, with eight women participating in our first round of empowerment training.

Offered families holistic support through 165 individual coaching sessions.



Celebrated 100% participation and high ratings on our first participant survey.

Received 1,680 hours of hands-on support from our committed volunteers.



2018 was a tremendous year of growth for our Rochester-Southeast MN program. Unprecedented city, county, state, corporate, private and faith-based philanthropic support has raised nearly all of our building capital goal and launched programming to our first group of families.

Together we are doing something wonderful that acting alone we could not. We are on track to break ground in 2019 on a 65,000 square foot campus with 40-units of safe, affordable housing and more. Our on-site child development center will offer Head Start and Early Head Start for 64 young children through a partnership with Families First of Minnesota.

**ROCHESTER-SOUTHEAST MN**  
126 Woodlake Drive SE  
Rochester, MN 55904  
507-215-8661



CAMPUS ENTRY PERSPECTIVE