



Jeremiah Program

MINNEAPOLIS
SAINT PAUL

A Place for Transformation

2018

was a year of tremendous opportunity for Jeremiah Program

as we celebrated our 20th Anniversary and laid the foundation to dramatically increase our impact over the next five years. We are deeply grateful for friends like you. Your support of our proven two-generation (2Gen) approach is vital to ending the cycle of poverty for an even greater number of single mothers and their children across the country.



We are pleased to share some national highlights from this past year. Thanks to your support, we:

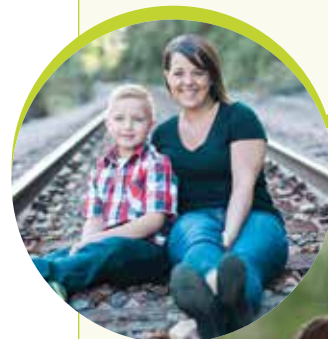
- » **Completed a new five-year strategic plan** with the goal to impact 4X more mothers and children by 2023.
- » **Hosted a 20/20 Vision Summit in Minneapolis**, convening more than 300 people to share challenges and best practices for transforming families two generations at a time.
- » **Formed a Diversity, Equity, and Inclusion Advisory Council** of diverse Jeremiah staff, board members, and graduates to ensure voices from across the organization are valued and reflective of our communities.
- » **Developed a new organization-wide evaluation framework** to track more outcomes for Jeremiah families, guide program design, and pave the way for a robust external impact evaluation.
- » **Celebrated the grand opening of our new Fargo-Moorhead campus**, which houses 20 furnished apartments and a licensed child development center to support families while mother and child attend school.
- » **Raised 90% of our capital campaign goal** to break ground on a new campus in Rochester-Southeast MN and began serving our first families through our signature empowerment training.

Five program pillars

- » Career-track college education
- » Quality early childhood education
- » Safe, affordable housing
- » Empowerment & life skills training
- » Supportive community

Our Mission

End the cycle of poverty for single mothers and their children two generations at a time.





Jeremiah Program

MINNEAPOLIS
SAINT PAUL

Jeremiah's first residential campuses with a total of 77 furnished apartments, on-site child development centers and more.



In 2018, we partnered with 382 women and children in the Twin Cities. In our early childhood education centers, 82% of our children were at or above age-appropriate development benchmarks. Surveyed graduate moms left Jeremiah Program earning an average of \$22.25/hour (\$46,280/year).

We welcomed our new Executive Director, La Juana Whitmore, in July, who brings a wealth of both business and nonprofit experience. Thanks to a group of volunteer consultants from Optum, we redesigned our life skills programming with direct input from Jeremiah moms, including a new curriculum covering topics mothers find most relevant to their day-to-day lives.

MINNEAPOLIS
1510 Laurel Ave
Minneapolis, MN 55403
612-692-8711

SAINT PAUL
932 Concordia Ave
St. Paul, MN 55104
651-332-5002

"I am in awe and proud of the life I have created for my son and me. I am filled with joy to be living the life I now get to live. I have broken the cycle in so many ways, and my son is a living example of that. He is growing up feeling loved, valued, safe and empowered. Jeremiah helped me see that and I taught him that myself."

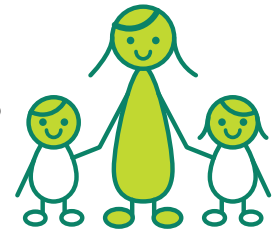
– Brittany, Jeremiah graduate

With your generous support, we:



Provided safe, affordable housing to 100 families.

Welcomed 39 new families to our Twin Cities campuses.



Celebrated nine moms graduating with postsecondary degrees.

Celebrated 19 preschoolers graduating from our child development centers, prepared for kindergarten and beyond.



Recognized 55% of moms who achieved a GPA of 3.0 or higher.

Continued partnering with Greater Minneapolis Crisis Nursery to provide onsite mental health services to moms and train staff in a trauma-informed model of care.

