

OUR STRATEGIC PLAN 2019-2023

We're Committed to Growing, Innovating and Measuring Our Success.

EXECUTIVE SUMMARY

Since our inception 20 years ago, Jeremiah Program, and the families we serve, have been changing the national conversation about single motherhood and generational poverty. We've demonstrated the success of our innovative 2Gen model. And we've successfully established campuses in five new locations outside of our first campus communities in Minneapolis-St. Paul, MN; Austin, TX; Fargo-Moorhead, ND; Boston, MA; Rochester-Southeast, MN; and Brooklyn, NY.

Three fundamental shifts underpin our current efforts to grow, innovate and measure success at Jeremiah Program. One, we're expanding the leadership tent, inviting in mothers who are the experts in how to best disrupt the cycle of poverty. Two, we're approaching poverty as a social justice issue rather than purely economic. And three, we're correcting the narrative about single motherhood, acknowledging that the women we serve are already great parents with the capacity to become the architects of their families' futures.

Under our current Strategic Plan, Jeremiah Program is focused on increasing impact through our existing campuses while responding to opportunities to bring our five pillars of service into new communities. By 2023, JP seeks to quadruple the number of mothers and children served by pursuing three new, cost-effective strategic priorities and continuing to leverage efficiencies across the current model. To achieve this impact, and with our donors' support, Jeremiah will invest an estimated five-year funding total of \$50.5M across the organization.

STRATEGIC OBJECTIVES

GROW.

We're scaling JP's impact through these growth initiatives.

- Leverage current assets and pursue partnerships in housing and early childhood education
- Expand the Jeremiah recipe of 2Gen services to new campus communities, addressing the needs of both mothers and their children
- Expand thought leadership reach and influence to lead transformational change for 2Gen programs

PURSUE EXCELLENCE & INNOVATION.

We're leveraging lessons learned to drive maximum impact while maintaining high-quality services for families and continuing to innovate for the future.

- Test/service product expansion of existing intellectual property
- Explore technology solutions
- Expand program eligibility
- Build Jeremiah brand

MEASURE IMPACT

We're investing in data collection to assess results, refine our programming and report on JP's impact.

- Create an organization-wide measurement framework
- Conduct an impact evaluation to measure long-term outcomes

To achieve this impact, Jeremiah will invest an estimated 5-year funding total of \$50.5M across the organization (\$14M more than steady state 5-year fundraising projections), and will continue to transform lives with donors' support.

JEREMIAH'S 5 CORE PILLARS



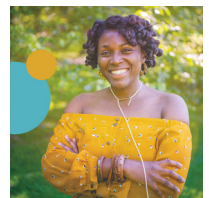
Career-Track Education



Quality Early Childhood Education



Safe & Affordable Housing



Empowerment & Life Skills Training



Supportive Community

Jeremiah Program

OUR IMPACT 2020

OUR MISSION

Disrupt the cycle of poverty for single mothers and their children two generations at a time.

Jeremiah Program envisions a world where single moms do not have to make the untenable choice between investing in themselves and investing in their children.

Look at the difference Jeremiah Program has made in the past year!



900+

LIVES IMPACTED

Impacted more than 900 mothers and children with our innovative twogeneration model for the path out of poverty

400

NEW MOMS

Received more than 400 new mom applications, a 600% increase from 2019

545

CHILDREN

benefitted from new educational summer camps, tutoring, remote learning opportunities, or quality child care

24

MOMS GRADUATED — CONGRATULATIONS!

Each level of education after high school reduces a single mom's likelihood of living in poverty by one third

268

LAPTOPS & TABLETS

distributed to support families' shift to remote learning

13

ALUMNI FELLOWS

selected to strengthen JP's advocacy for single mothers



“The Jeremiah Program is an amazing opportunity for single mothers and their children. Being a part of this community has helped me grow as an individual, and is constantly empowering me as a mother and student. I am so appreciative for the support that the staff and community have offered me. I am now excited for what the future has to offer my daughter and me. I am so thankful to be a part of this program.”

—Emma Jo